

Usable Biometrics

Joshua Debner

What kind of Biometrics?

Physiological - Body Parts

Specifically What Kind?

Technologies dealing with your face...

Facial Recognition

Iris Recognition

Retinal Scan

Biometric Requirements

FAR / FMR

FRR / FNMR

FTE / FER

FTC

What kind of Authentication?

Identification - One to Many

Verification - One to One

BBC animations

[http://news.bbc.co.uk/2/shared/spl/hi/guides/
456900/456993/html/](http://news.bbc.co.uk/2/shared/spl/hi/guides/456900/456993/html/)

Usability Concerns

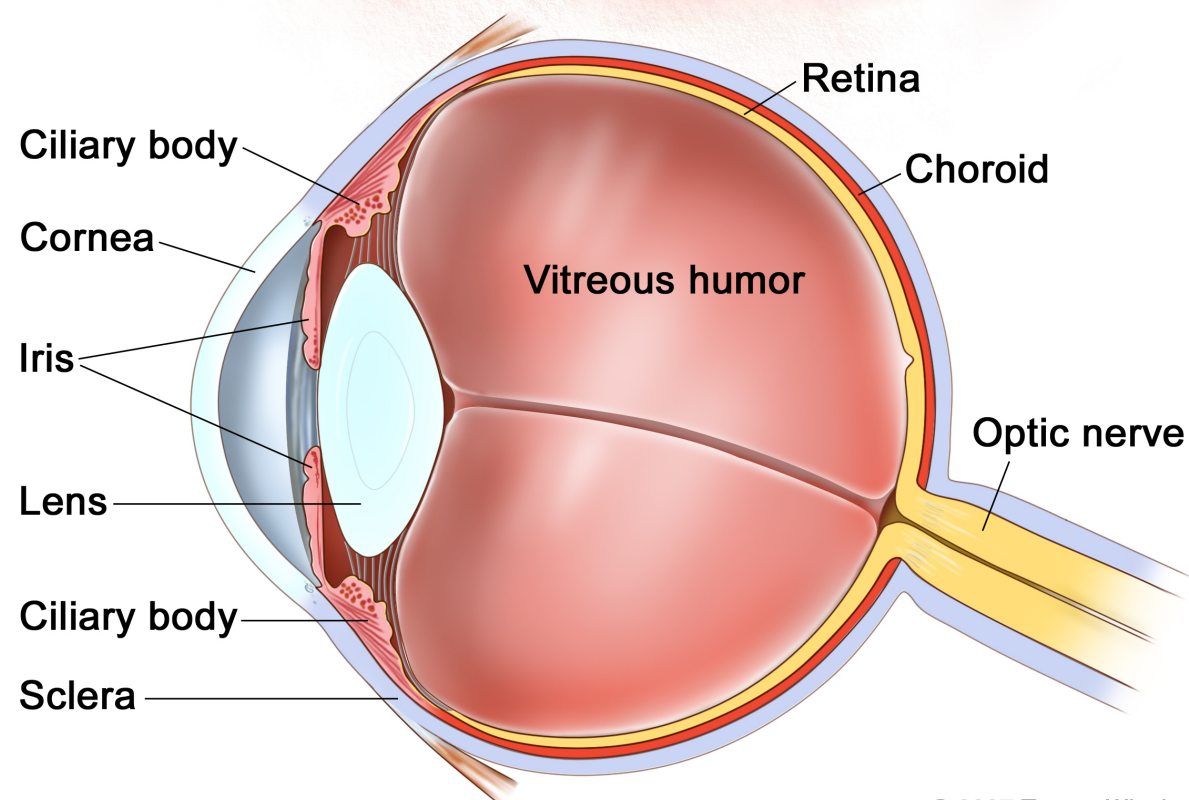
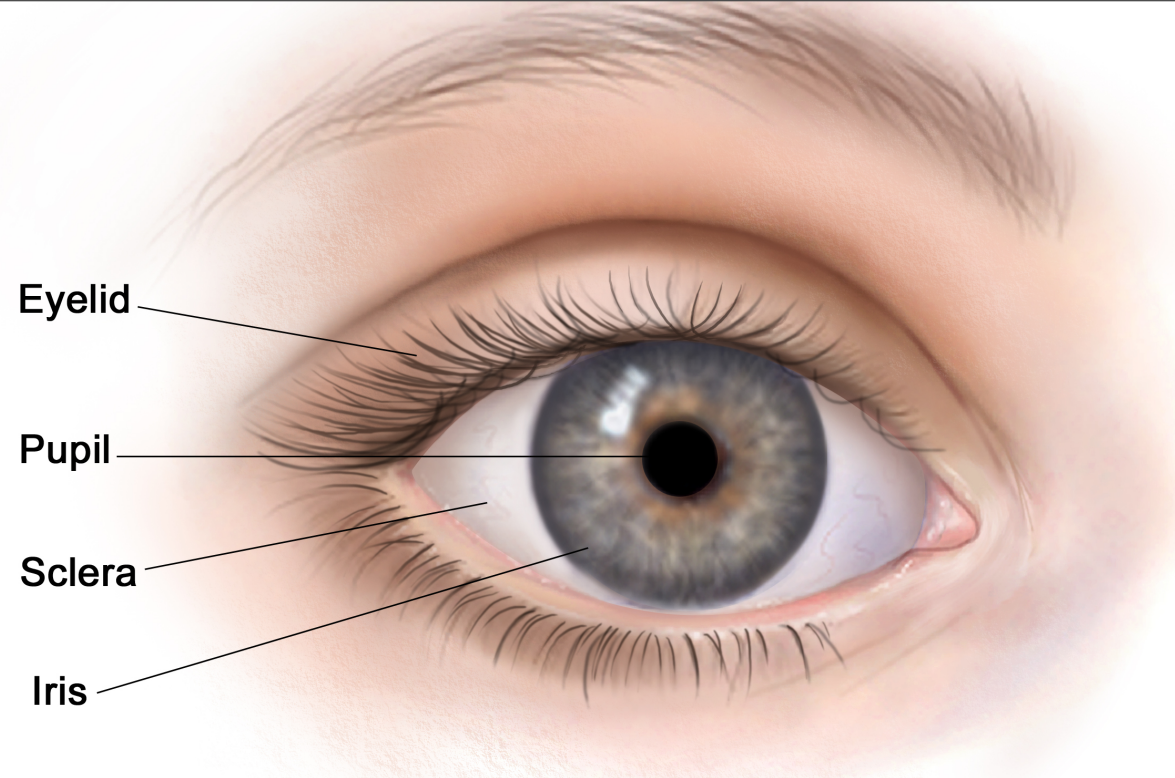
- Requires specific process from User
- Sometimes makes user go out of their way
- Requires long enrollment process
- Acceptance issues

Facial Recognition

Problems:

- Neutral
- Full Frontal
- Lighting/Glasses/Accessories





© 2007 Terese Winslow
U.S. Govt. has certain rights

Understanding the Eye



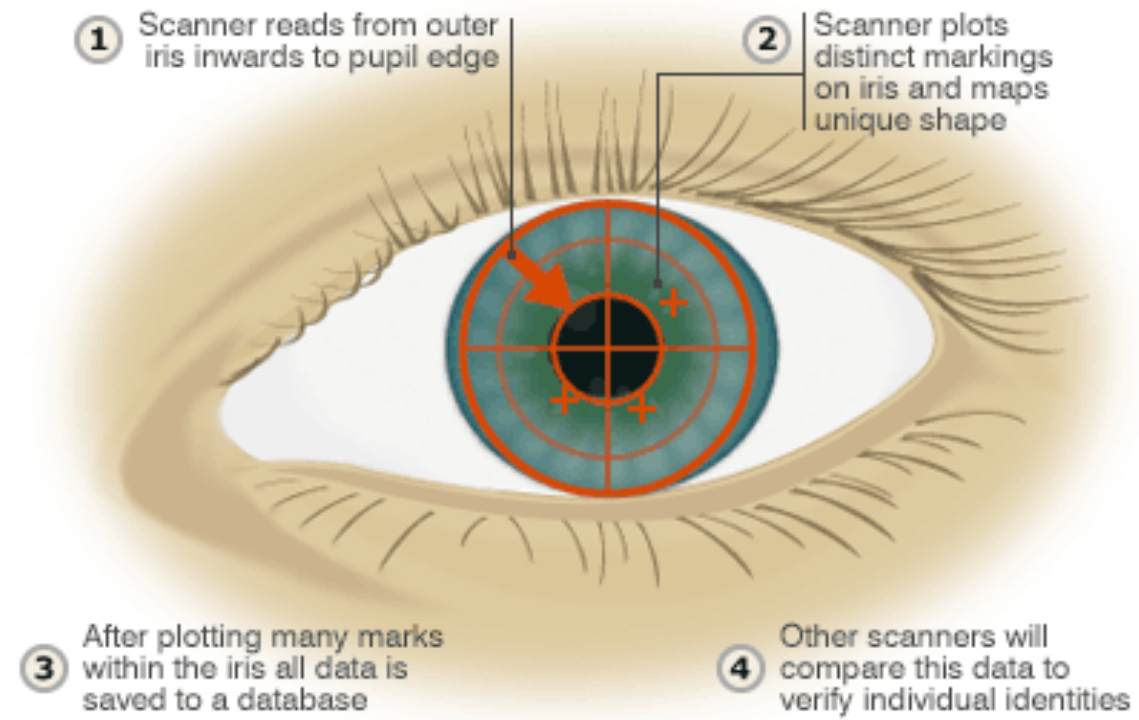
Retina

Retinal Scan

Problems

- Must be close to camera (IR)
- Scanning can be invasive
- Not User friendly
- Expensive

HOW IRIS SCANNERS RECORD IDENTITIES



Iris

Iris Recognition



Problems

- Late to the game
- Requires advanced technology to properly capture iris
- Users do not have to consent to have their identity tested



photo by Steve McCurry



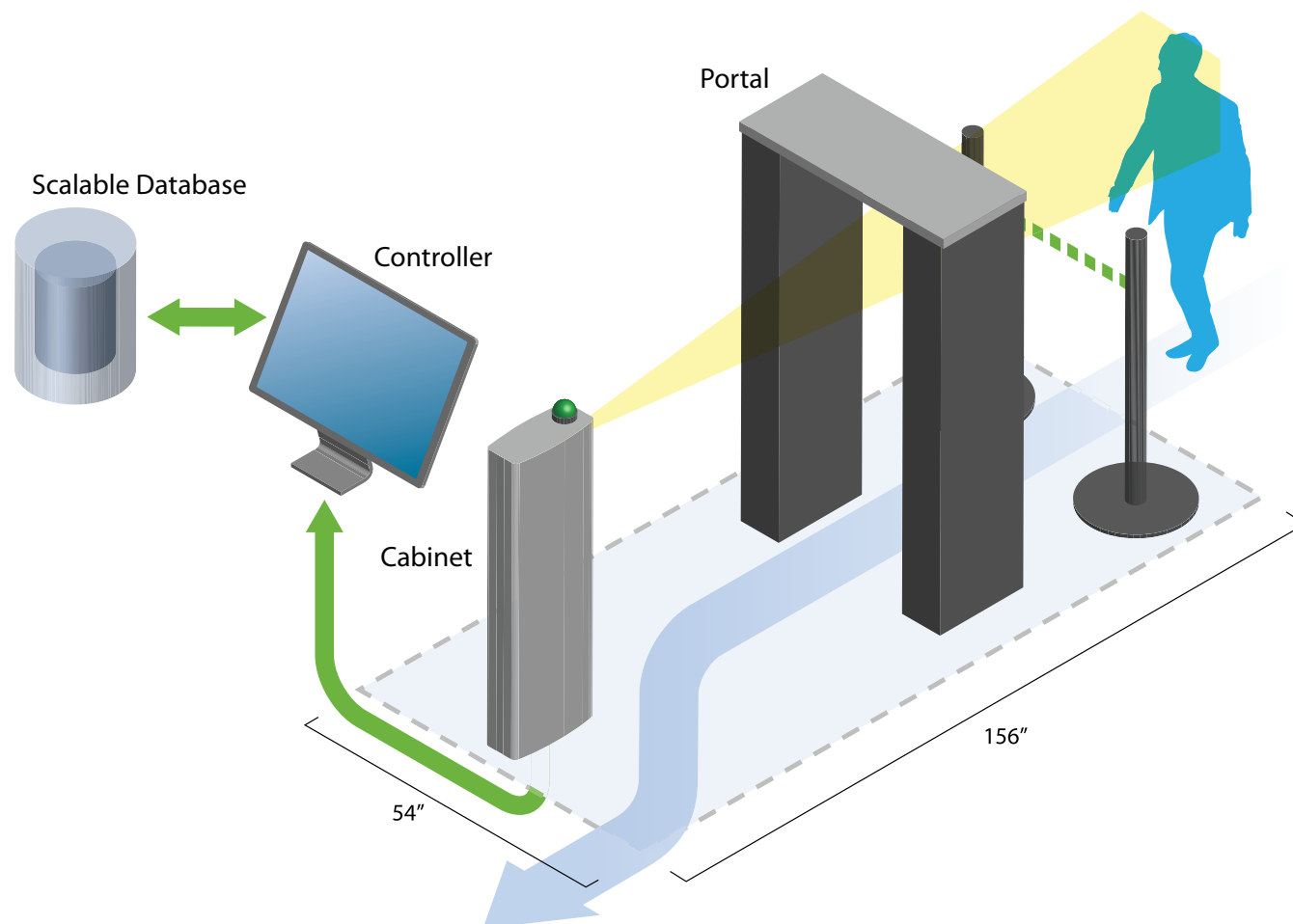
National Geographic's "Afghan girl"—For 17 years photographer Steve McCurry has tried to once again find the subject of his famous 1984 photo. Now he has. Meet the "Afghan girl" in the April 2002 issue of *National Geographic* magazine. Subscribe online at nationalgeographic.com.

© 2002 National Geographic Society. All rights reserved.

 NATIONALGEOGRAPHIC.COM

Commercial Solutions

Iris on the move



Research @ CMU

[http://www.thepittsburghchannel.com/video/18980500/
index.html](http://www.thepittsburghchannel.com/video/18980500/index.html)

http://www.pittsburghlive.com/x/pittsburghtrib/news/pittsburgh/s_621234.html

<http://www.thepittsburghchannel.com/news/18980382/detail.html>

<http://www.thepittsburghchannel.com/video/18980500/index.html>

<http://www.timboucher.com/journal/2009/01/15/our-eyes-are-mandalas-iridology-eye-retina-iris-scans/>

<http://news.bbc.co.uk/2/shared/spl/hi/guides/456900/456993/html/nn3page1.stm>

<http://en.wikipedia.org/wiki/Biometrics>

http://en.wikipedia.org/wiki/Iris_recognition

http://en.wikipedia.org/wiki/Facial_recognition_system

<http://www.cylab.cmu.edu/research/chronicles/savvides.html>

Sources